

INTERNATIONAL POLICE ASSOCIATION

Celebration 2023



Region 7 - Montreal

50th anniversary Celebration

19-26 May 2023



Montreal

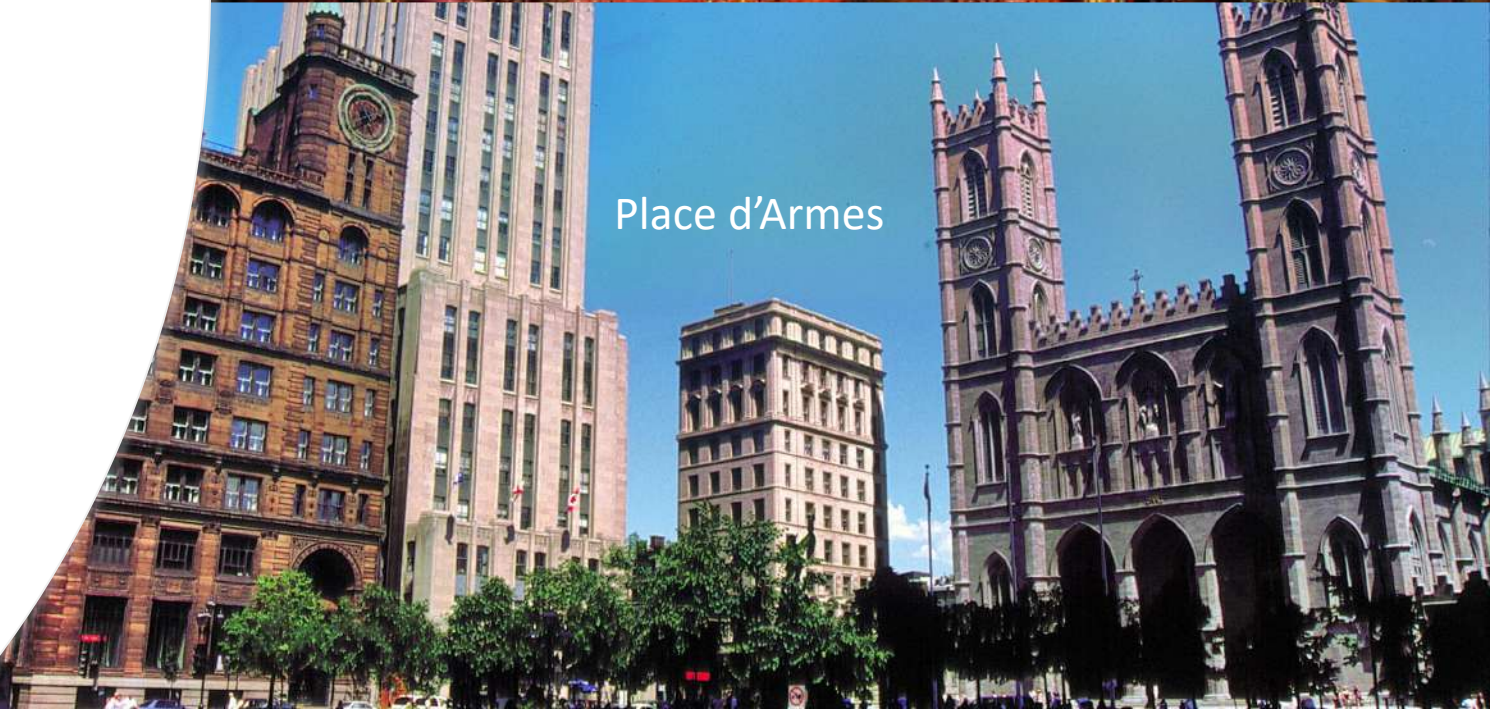
Main attractions

Old Montreal and Old Port
Notre-Dame Basilica
1976 Olympic Stadium
Rio Tinto Alcan Planetarium
Biodome
Botanical Garden
Insectarium
Biosphere
Montreal's Underground City
World Trade Centre
Place D'armes
St-Joseph oratory
Museums galore
Super shopping malls
Famous bagels
Smoked meat & poutine

Montreal's Notre-Dame Basilica presents AURA, an immersive sound and light experience in the heart of the basilica, conceived and produced by the renowned Moment Factory team.



Place d'Armes, neatly encapsulates the city's evolution since its founding and the richness of its heritage today. At its centre, Montreal's founders, Paul Chomedey de Maisonneuve



Place d'Armes

Rue St-Paul - Old Montreal





The Insectarium

The Biodome

The Japanese garden at the Botanical Garden

The Planetarium – Rio Tinto Alcan

You can spend the whole day at these 4 venues located in the same area

An \$80.00 passport is available

Montreal Espace de la Vie

Our volunteers will accompany your guest while and if you attend the AGM



Drinks, food and Soft jazz at the Jardin St-Denis in Old Montreal



Shopping at the Eaton Centre

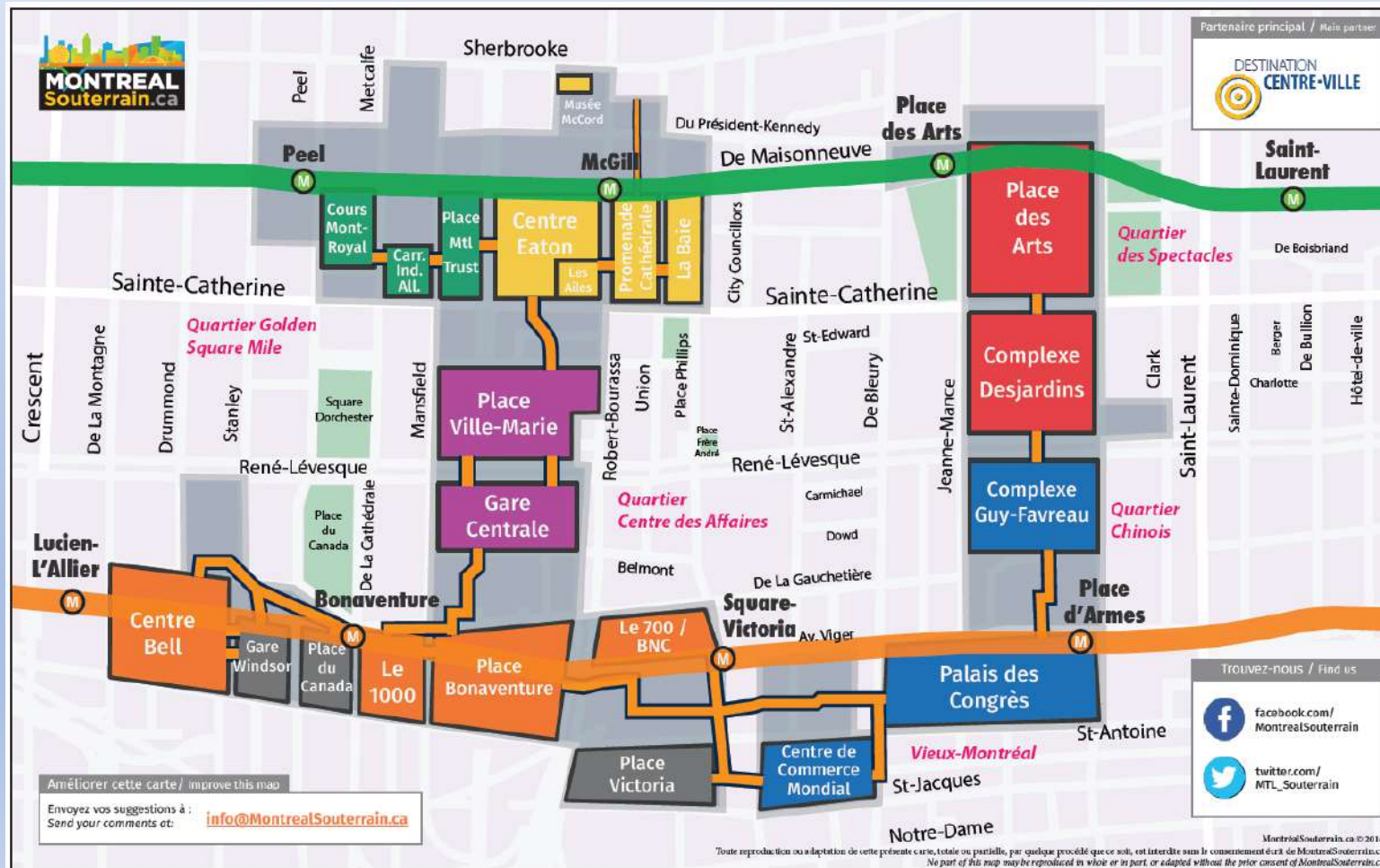


Hockey fans can see just steps from the Windsor Station the bronzes of the famous Montreal Canadian hockey players

Since 1993, the structure is no longer connected to the rail network. It was sold by CP to [Cadillac Fairview](#) in 2009^[10] (thus removing it from the jurisdiction of the Heritage Railway Stations Act; consequently, it was classified as a provincial heritage site that same year). Also located in the station is the Canadian Railway Office of Arbitration. The rest of Windsor Station has been redeveloped into an office complex and houses some restaurants and cafés. The interior concourse, which is open to the public, can be rented for private and public events. The lower floor is part of the [RÉSO](#) and connects the [Bonaventure metro station](#) with the [Lucien-L'Allier commuter rail station](#) as well as the [Bell Centre](#). The 13 terminal tracks running into Windsor Station and the overhead canopy have been removed, and replaced by a public square.



If it rains while in Montreal! no problem we will go in Montreal's Underground City (RESO)



Nearly 500,000 people use it per day. It is also one of the largest underground complex in the world. It stretches for 32 kilometers (20 miles) and covers 4 million square meters. According to official statistics, its corridors link up with 10 metro stations, 2 bus terminals, 1,200 offices, about 2,000 stores including 2 major department stores, approximately 1,600 housing units, 200 restaurants, 40 banks, movie theatres providing 40 screens and other entertainment venues, 7 major hotels, 4 universities, Place des Arts, a cathedral, the Bell Centre (home of the Montreal Canadiens), and 3 exhibition halls: the Place Bonaventure, the Convention Centre (Palais des Congrès de Montréal) and the Olympic Centre.

Shawinigan and Trois-Rivières venue

THE PRIME MINISTER JEAN CHRETIEN
MUSEUM – CANADA IN THE WORLD

This historical and political exhibition highlights Canada's role on the world stage through hundreds of gifts received by the Honourable Jean Chrétien, former Prime Minister of Canada, during his term of office. The exhibit also includes interactive kiosks, video presentations and a physical replica of Mr. Chrétien's office in Ottawa.



Shawinigan and Trois-Rivières venue

**CITÉ DE L'ÉNERGIE
HYDRO ELECTRIC COMPLEX**

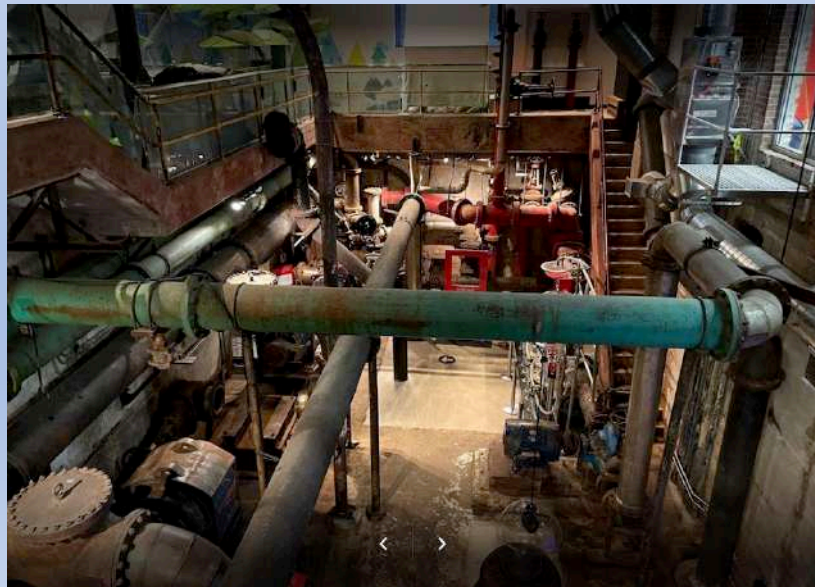


Shawinigan and Trois-Rivières venue

TROIS-RIVIÈRES – QUEBEC

BOREALIS MUSEUM

THE HISTORY OF THE PULP AND PAPER INDUSTRY
IN QUEBEC



VISIT AND LUNCH AT THE CITADELLE OF QUEBEC

La Citadelle, is an active military installation and the secondary official residence of both the Canadian monarch and the governor general of Canada. It is located atop Cap Diamant, adjoining the Plains of Abraham in Quebec City, Quebec.



City of Quebec venue

Audio MP3 files
and guide map
will be supplied

Scenes of Quebec City



Scenes of Quebec City



Grosse Île and the Irish Memorial National Historic Site

Walk in the footsteps of the tens of thousands of immigrants who arrived at Grosse Île in the hopes of a better future. Located in the middle of the St. Lawrence River, Grosse Île was once the main gateway into Canada and served as a quarantine station for the port of Québec from 1832 to 1937. Explore the island's rich Irish heritage, dive into the lives of villagers, workers, and immigrants, and discover the island's history of scientific and medical advances as you surround yourself with moving stories and beautiful landscapes. Unforgettable experiences await you at Grosse Île and the Irish Memorial National Historic Site!

There are three cemeteries on Grosse Île, containing **7,756 burials**. The largest—known as the Irish Cemetery—is in the western section. More than 6,000 victims are buried here, including 5,424 from 1847 alone.



HOTELS DURING YOUR STAY

NOUVEL HOTEL MONTREAL



LES SUITES LAVIOLETTE IN TROIS-RIVIERES



QUALITY INN & SUITES IN LÉVIS

SOME OF MONTREAL'S MUST-TRY DISHES



SMOKED MEAT SANDWICHES



POUTINE



FRESH HOT BAGELS